



Hyde Park Towers, 1 Porchester Terrace,  
, W2

Asking Price £1,350,000, Leasehold

NAPIER WATT

T: 0207 935 0011  
E: [enquiries@napierwatt.co.uk](mailto:enquiries@napierwatt.co.uk)  
W: [napierwatt.co.uk](http://napierwatt.co.uk)

35 Berkeley Square, Mayfair, London, W1J 5BF













## Description

A 1,012 Sq. Ft 6th floor (lift) 2 bedroom lateral apartment with uninterrupted views of Hyde Park. The apartment is located in Hyde Park Towers a highly desirable block directly opposite Hyde Park and includes concierge and a private underground parking space. Furthermore there are two bedrooms, a kitchen, a spacious reception-dining room and balcony. Hyde park towers is well located for local amenities and is close to Lancaster Gate Underground Station, Bayswater Underground Station and Paddington Station.

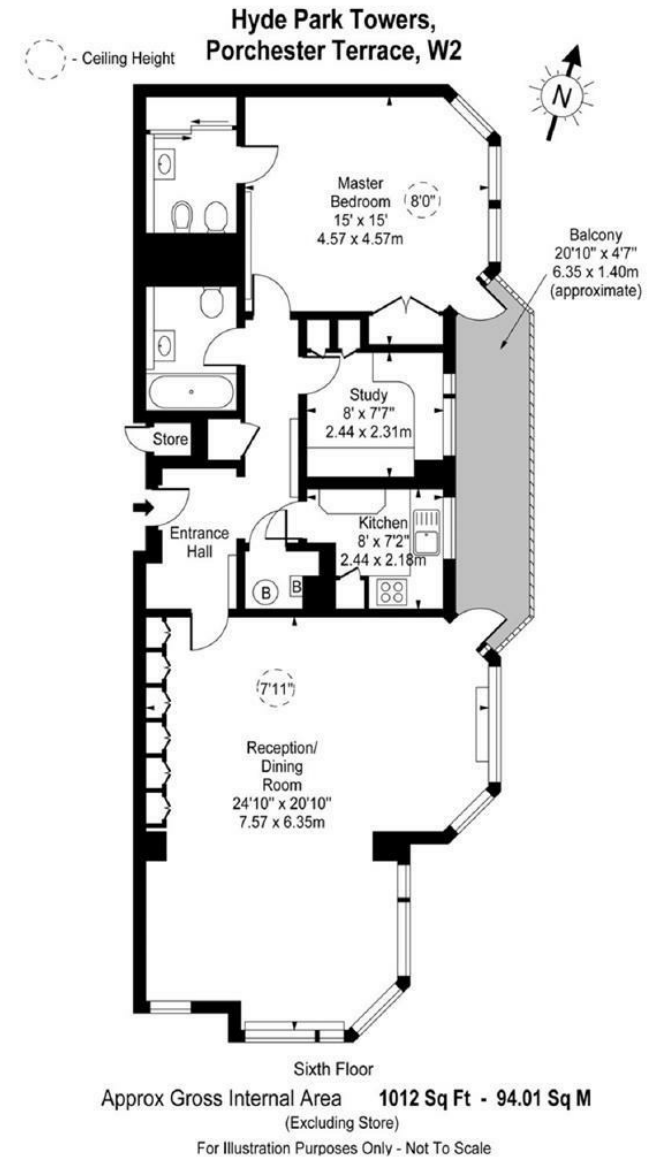
Entrance Hall : Reception Room : kitchen : Master Bedroom With Ensuite : 2nd Bedroom / Study : Bathroom : Balcony : 24 Hour Porter : Lift : Tax Band G : EPC C : Secure Parking :

## Key Features

- BALCONY
- SECURE PARKING
- CLOSE TO BAYSWATER STATION
- LIFT
- OPPOSITE HYDE PARK
- STUNNING VIEWS

## Terms

Leasehold - 999 years from 1 January 1977  
 Service Charge INC reserve Fee : £7,191 per half year  
 Ground Rent : £125pa



IMPORTANT: We would inform prospective purchasers that these sales particulars have been prepared as a general guide only. A detailed survey has not been carried out, nor the services, appliances and fittings tested. Room sizes should not be relied upon for furnishing purposes and are approximate. If floor plans are included, they are for guidance only and illustration purposes only and may not be to scale. If there are any important matters likely to affect your decision to buy, please contact us before viewing the property.